

# MOD / NATO Disposals

ilitary vehicles and equipment for sale

[www.modsurplus.co.uk](http://www.modsurplus.co.uk)

Tel: +44 (0)1302-954007

[Return to Homepage](#) | E-Mail: [sales@modsurplus.co.uk](mailto:sales@modsurplus.co.uk)



REQUEST A QUOTE

or call us on UK +44(0)1302-954007

## Description / Ref

Mercedes Unimog U1300L Turbo RHD - 50207

Photo (a gallery of photos is provided below - where available)



## Details

Just arrived a batch of Ex Military Mercedes Unimog U1300L RHD Cargo Vehicles

All vehicles are in excellent condition very clean with no rust, the chassis's have all been waxoil treated

Choice of 50 vehicles available ex stock

### • Specification:

- Right Hand Drive
- Engine Type: OM366 Turbo
- Fast Axles (Type: HU2/14S-4.0)
- Heavy duty drop side cargo body with steel chequer plate floor
- Werner 5,000 Kg hydraulic winch mounted at the rear of the vehicle for front pull
- Front mounted bull bar

Vehicles would make an ideal conversion for a tipper or agricultural use or even overlander

Videos (if available)

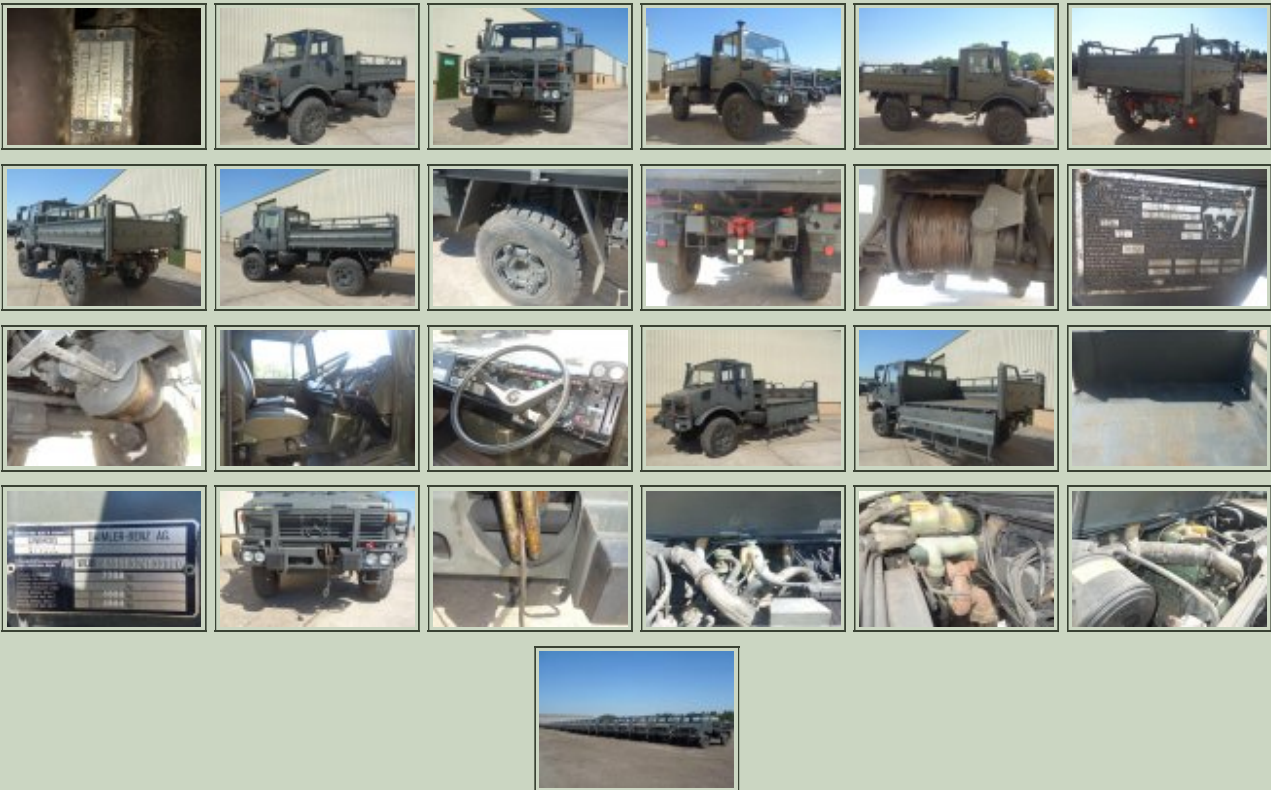
Category	Cargo Trucks	Length	5.9 M
Manufacturer	Mercedes	Height	2.6 M
Engine	OM366 6 Cylinder Turbo	Width	2.3 M
Gearbox	8 speed manual	GVW	7,800 Kg
Brakes		Hrs_Kms	10,000-40,000 Kilometres
Steering	RHD - PAS	Date into Service	
Tyres	Michelin 335/80R20	Year of Manufacture	
Max Load		Qty Available	50
Electrics	24V	Export Requirements <a href="#">...more</a>	SIEL Licence Required



REQUEST A QUOTE

or call us on UK +44(0)1302-954007

### Photo Gallery



All prices quoted are GBP U.K. Pounds Sterling Ex. Works excluding VAT where applicable and shipping / associated costs.

Vehicles advertised are subject to remaining unsold.

All prices quoted are based on **"per individual unit"** purchased, any reductions on advertised price for multiple item orders is subject to negotiation and is conducted at the time of inspection or provision of LOI.

Photo's shown above may represent a vehicle type rather than an actual vehicle, vehicles are available serviced and painted to customers preference



An export licence may be required for items sold to customers outside of the U.K.  
**FOR MORE INFORMATION ON EXPORT LICENCING PROCEDURES**

**[CLICK HERE](#)**

**FOR INFORMATION ON CURRENT EU EMBARGOES**

**[CLICK HERE](#)**