

# MOD / NATO Disposals

ilitary vehicles and equipment for sale

[www.modsurplus.co.uk](http://www.modsurplus.co.uk)

Tel: +44 (0)1302-954007

[Return to Homepage](#) | E-Mail: [sales@modsurplus.co.uk](mailto:sales@modsurplus.co.uk)



REQUEST A QUOTE

or call us on UK +44(0)1302-954007

## Description / Ref

Liebherr LTM1120 crane - 50238

Photo (a gallery of photos is provided below - where available)



## Details

Liebherr LTM1120 crane. 120 ton capacity, 5 axle, 10x8x10, 1994 year.

- 63,111 kilometres
- Bottom cab hours 7,498
- Top cab hours 6,888
- Max boom length: 45 metres

The crane has undergone a 10 year full liebherr inspection at liebherr factory in 2004.

Equipped with autolube central lubrication system for the upper section.

Full counterweights supplied with a total weight of 28.7 tons

Supplied with two hook blocks, crane is currently fitted with single sheave block, 5 sheave block provided.

Bottom engine is a Mercedes OM 442 353 KW V8

Transmission: Allison automatic 5 forward gears, one reverse

Max speed 65.8 Km/h

Top engine is a Mercedes OM366 121 KW 6 cylinder

This crane is available ex stock and in good operating condition. Supplied with full set of manuals and service history.

Videos (if available)

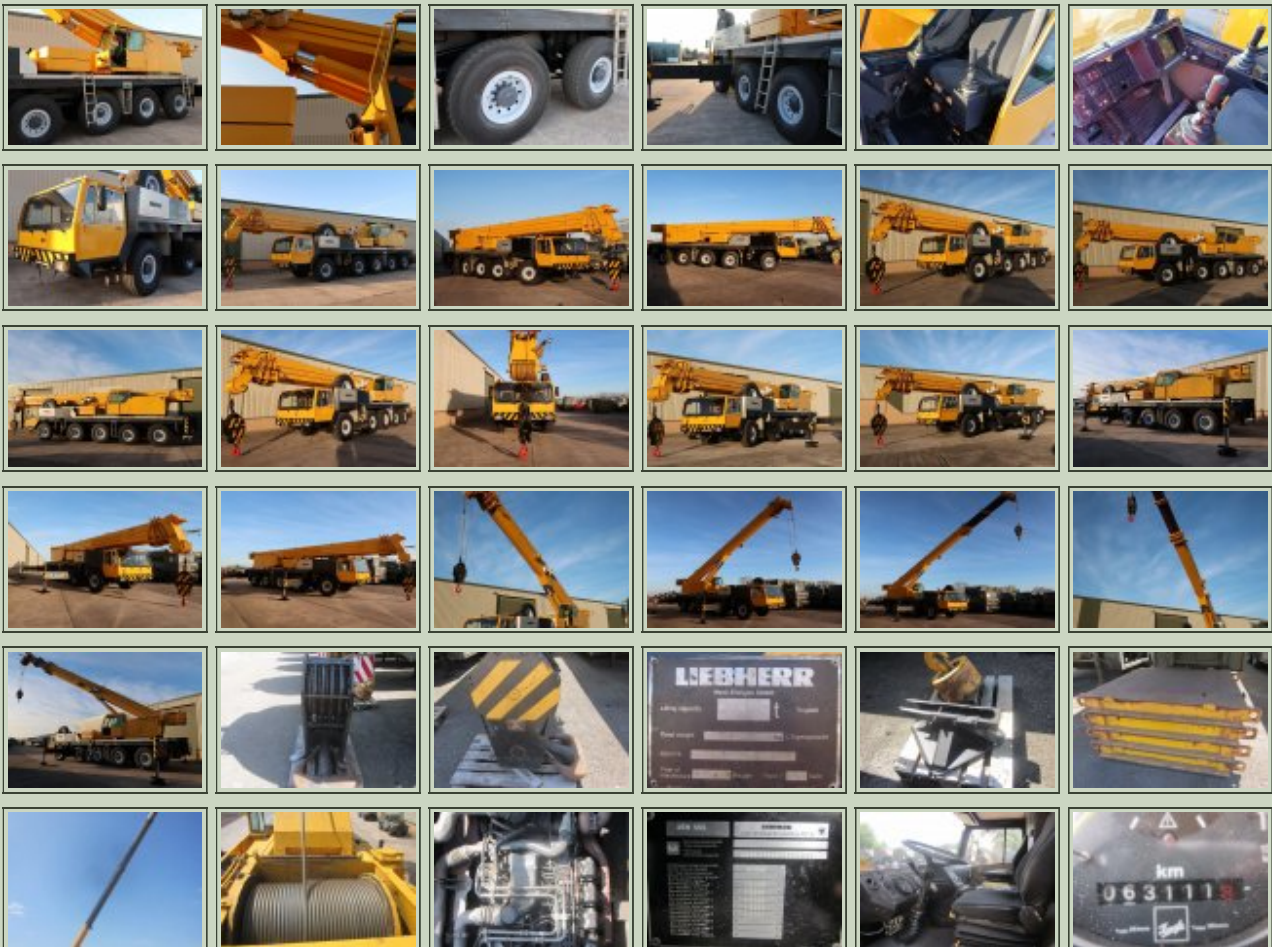
Category	Cranes	Length	15.9 M
Manufacturer	Leibherr	Height	3.8 M
Engine	Mercedes OM442	Width	3 M
Gearbox	Allison automatic	GVW	60,000 kg's
Brakes		Hrs_Kms	66,000 km's
Steering	LHD	Date into Service	
Tyres	16.00-R25	Year of Manufacture	1994
Max Load	120 tons	Qty Available	1
Electrics	24 V	Export Requirements <a href="#">...more</a>	NLR (No Licence Required)




REQUEST A QUOTE

or call us on UK +44(0)1302-954007

## Photo Gallery





■  
All prices qoted are GBP U.K. Pounds Sterling Ex. Works excluding VAT where applicable and shipping / associated costs.

■  
Vehicles advertised are subject to remaining unsold.

■  
All prices quoted are based on "**per individual unit**" purchased, any reductions on advertised price for multiple item orders is subject to negotiation and is conducted at the time of inspection or provision of LOI.

■  
Photo's shown above may represent a vehicle type rather than an actual vehicle, vehicles are available serviced and painted to customers preference

■  
An export licence may be required for items sold to customers outside of the U.K.

**FOR MORE INFORMATION ON EXPORT LICENCING PROCEDURES**

**[CLICK HERE](#)**

**FOR INFORMATION ON CURRENT EU EMBARGOES**

**[CLICK HERE](#)**