

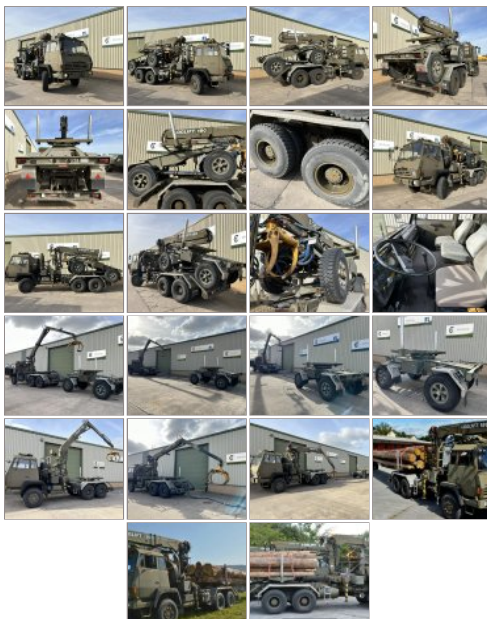
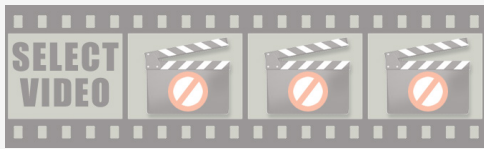
www.govsales.co.uk - The UK's leading suppliers of ex. military vehicles

## Govsales - Ex MoD Surplus, Ex Army Trucks, Vehicles & Equipment

Steyr 1491.310 6x6 Timber Loglift Cargo / Crane Truck - MoD Ref: 50525



 Share on Facebook



Steyr 1491.310 6x6 Timber Loglift Cargo / Crane Truck - MoD Ref: 50525

## Details

Steyr 1491.310 6x6 Timber Loglift Truck

Direct from the military in excellent condition with low kilometres

Fitted with Loglift F190S crane with rotator grab

- 19mt crane
- 4700Kg at 4M
- 3800Kg at 5M
- 3100Kg at 6M
- 2700Kg at 7M
- 2500Kg at 7.5M

Complete with Andres 2 axle trailer dolly self loaded on and off the truck using the loglift crane in order to carry/support the load

These vehicles could have a number of roles in forestry work, pipeline carrier, bridge section carrier etc

<b>CATEGORY</b>	Cargo Trucks
<b>MANUFACTURER</b>	Steyr
<b>ENGINE</b>	Steyr 6 Cylinder turbo diesel 320HP
<b>GEARBOX</b>	ZF 8 Speed Manual with WSK400 Torque Converter
<b>BRAKES</b>	Dual Circuit air
<b>STEERING</b>	LHD - PAS
<b>TYRES</b>	12.00R20
<b>ELECTRICS</b>	24 volt
<b>L x W x H</b>	9.30m x 2.50m x 3.80m
<b>GROSS WEIGHT</b>	25,000 Kg
<b>HOURS / MILEAGE</b>	40,000-80,000 Kilometres
<b>DATE INTO SERVICE</b>	1993
<b>YEAR OF MANUFACTURE</b>	1993
<b>QTY AVAILABLE</b>	2
<b>EXPORT REQUIREMENTS</b>	OGEL/SIEL Licence Required
<a href="#">...more</a>	

**PRICE**



**REQUEST A QUOTE**



OFFLINE - Send us an email



All prices quoted are GBP U.K. Pounds Sterling Ex. Works excluding VAT where applicable and shipping / associated costs.

Vehicles advertised are subject to remaining unsold. All prices quoted are based on "per individual unit" purchased, any reductions on advertised price for multiple item orders is subject to negotiation and is conducted at the time of inspection or provision of LOI. For complete Terms & Conditions See Main Website. Photo's shown above may represent a vehicle type rather than an actual vehicle, vehicles are available serviced and painted to customers preference. An export licence may be required

for items sold to customers outside of the U.K.



Steyr 1491.310 6x6 Timber Loglift Cargo / Crane Truck  
Govsales of Ex Military vehicles for sale, Ex Military Land Rovers for sale, Ex army trucks for sale, MoD Surplus, Ex MoD and NATO Disposals, Ex Military and Nato Plant and Equipment

OFFLINE - Send us an email

